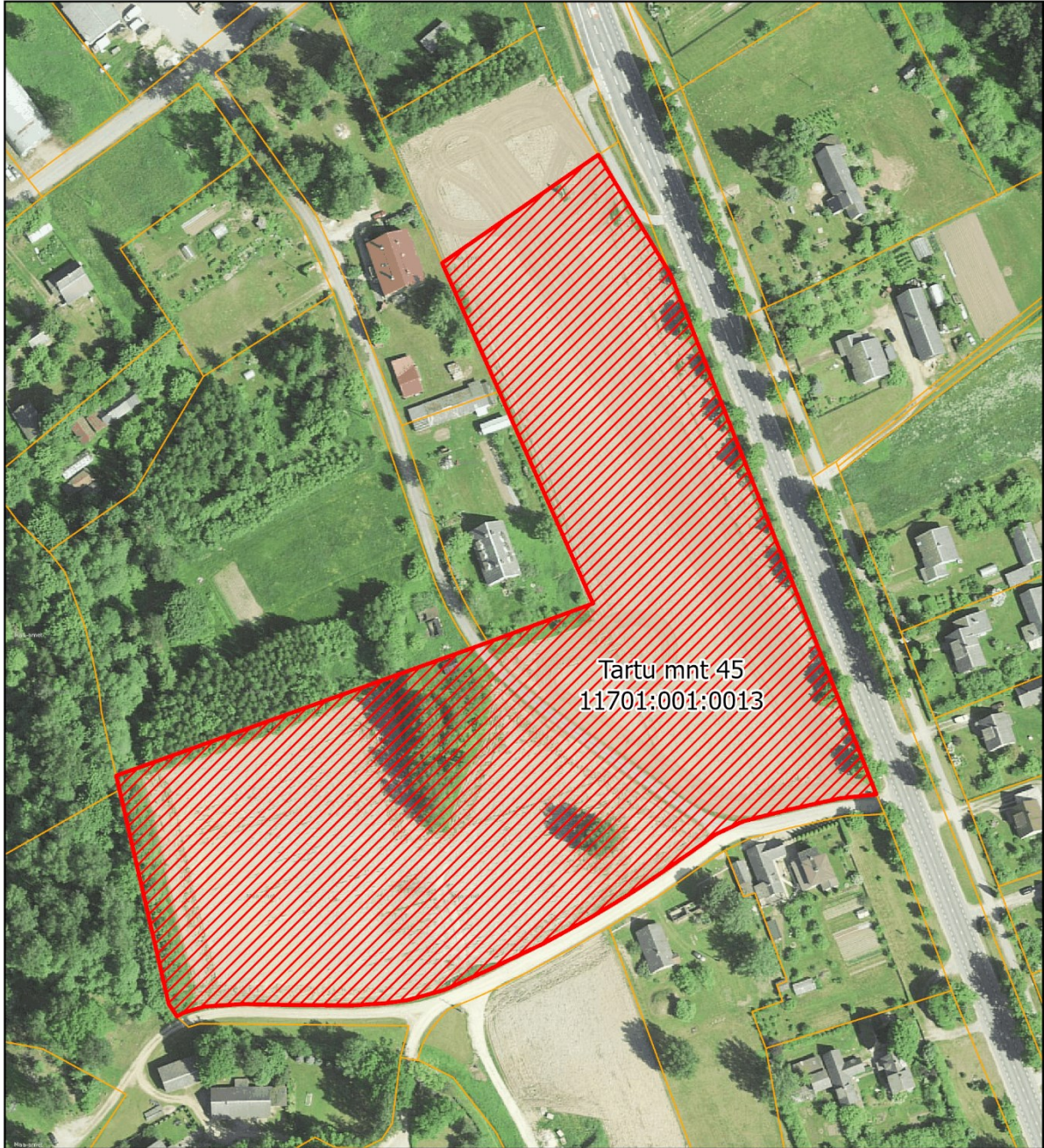




Põlva Vallavalitsuse 24.11.2022. a  
korralduse nr 2-3/534 "Ahja alevikus Tartu mnt 45  
katastriüksuse detailplaneeringu algatamine ning  
keskkonnamõju strateegilise hindamise algatamata jätmine"  
Lisa

## Planeeringuala asendiplaan



-  Planeeringuala ca 30 803 m<sup>2</sup>
-  Katastriüksuste piirid